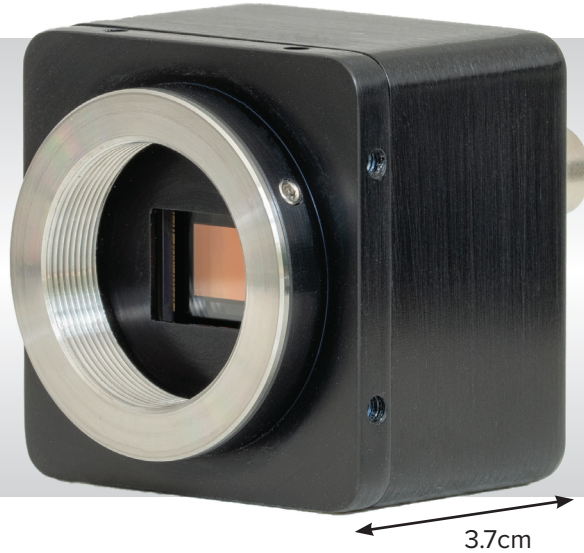


Hawk 1920

HD Resolution, Ultra Sensitive, Monochrome & Colour Options,
Digital CMOS Camera • 1920 x 1080 • 60Hz • Digital • Global Shutter • CS Mount



PRELIMINARY



Key Features and Benefits

HD 2/3" CMOS Night Vision Mono/RGB Camera

- **1920 x 1080, 4.5µm pitch CMOS technology**
Enables highest resolution imaging from 0.3µm to 1.1µm
- **Latest Generation CMOS technology**
Enables ultimate sensitivity similar to II or EMCCD
- **Ultra compact and rugged**
Easy integration into any Electro-Optics platform
- **High QE: >77% @ 510nm**
Enables better quality image under low light conditions
- **Global shutter, progressive scan technology**
Enables real time, lag-free images at 60Hz full-frame

Resolution	1920 x 1080
Frame Rate	60Hz
Dynamic Range	72dB
Peak QE	77% @ 510nm

Specification for Hawk 1920

	Monochrome	Color
Sensor Type	2/3" CMOS	
Active Pixel	1920 x 1080	
Frame Rate	60Hz	30Hz
Pixel Size	4.5µm x 4.5µm	
Active Area (Diagonal)	8.64mm x 4.86mm (9.91mm)	
Dynamic Range	72dB	
Anti-blooming	Yes	
Spectral Response	300-1100nm	
Peak Quantum Efficiency	77% @ 510nm 28% @ 800nm	
Non-Linearity	<1%	
Total Power Consumption	<4W	
Minimum Illumination	< 200µlux	
Output Format	12 bit Camera Link (base configuration)	8 bit Camera Link
Synchronization	Trigger In & OUT - TTL compatible	
Trigger Connectors	SMA type	
Cooling	Uncooled	
Lens Mount	CS mount, back focus capability	
Power Connector	Hirose part code HR10A-7R-4PB	
Power Supply	12V DC ±10%	
Operating Temperature Range ¹	-20°C to +55°C	
Storage Temperature Range	-40°C to +70°C	
Dimensions (L*W*H) ²	43mm x 43mm x 37mm	
Weight (excluding lens)	95g	

Raptor Photonics Limited reserves the right to change this document at any time without notice and disclaims liability for editorial, pictorial or typographical errors.

Demo is available on request.
Pricing AOR subject to volumes.

Ordering Information

Camera

Hawk 1920 Digital camera	HK1920-CL
Hawk 1920 Digital PSU	RPL-HR4-K
Hawk 1920 Color Digital Camera	HK1920-CL-C

Optional Accessories

Mini PC with XCAP Std and frame grabber	RPL-PC-mf2280
Thunderbolt frame grabber	RPL-mf2280
EPIX® EB1 frame grabber	RPL-EPIX-EB1
EPIX® XCAP software	RPL-XCAP-STD
Camera Link Cable (2m) ³	RPL-CL-CBL-2M

Lenses

Optical Visible & CCTV day/night lenses ⁴	RPL-xx-xxxx
--	-------------

Note 1: Extended operating temperature range on request.

Note 2: Dimensions include all connector parts on the camera interface.

Note 3: Longer Camera Link cable available.

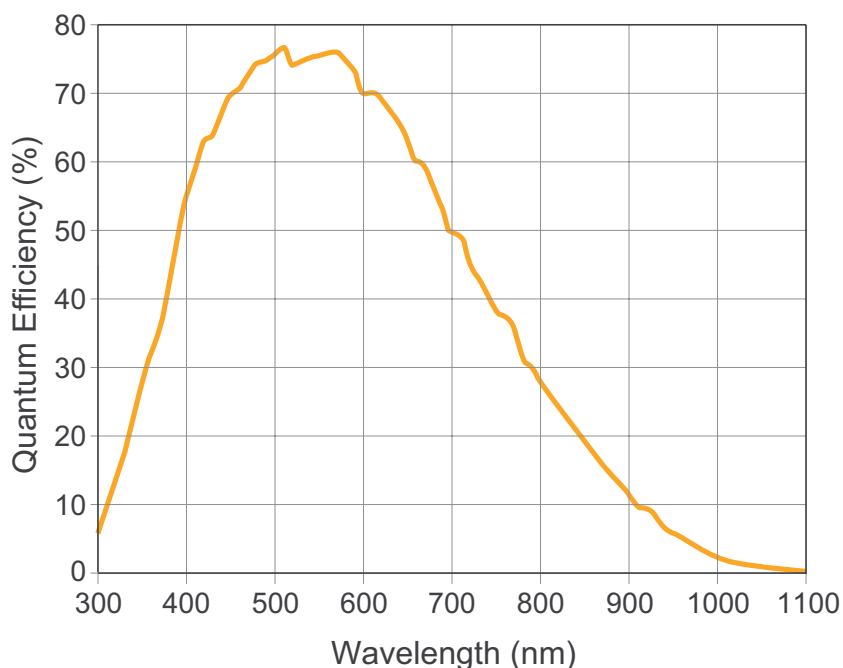
Note 4: Please consult us to check our range of lenses.

Custom Options

- No CS-Mount
- Board level
- Extended operational temperature -40°C to +75°C
- Flexi-rigid electronics to fit specific EO systems
- Customized mechanics
- Digital video output eg HD-SDI

Detailed technical drawings
can be downloaded at
www.raptorphotonics.com

Quantum Efficiency



*Data supplied by sensor manufacturer

Applications

Surveillance

- Low-light Surveillance
- Airborne Surveillance
- Driver Vision Enhancement (DVE)
- Digital Night Vision