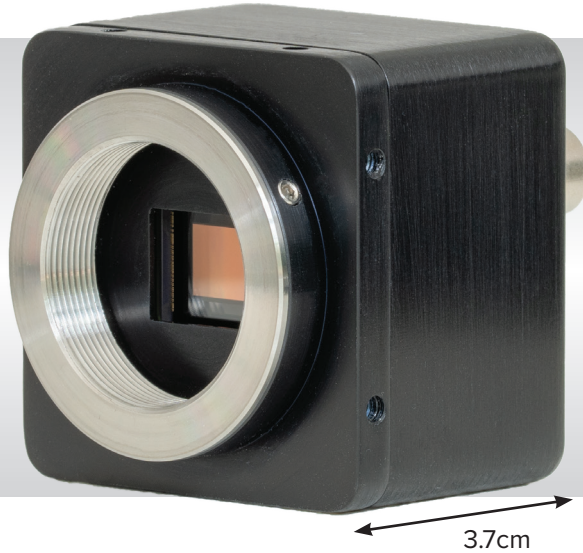


Hawk 800

SVGA Resolution, Ultra Sensitive, Monochrome, Digital CMOS Camera
816 x 624 • 60Hz • Digital • Global Shutter • CS Mount



PRELIMINARY



Key Features and Benefits

SVGA 1/1.7" CMOS Night Vision Mono Camera

- **816 x 624, 9µm pitch CMOS technology**
Enables SVGA resolution imaging from 0.3µm to 1.1µm
- **Latest Generation CMOS technology**
Enables ultimate sensitivity similar to II or EMCCD
- **Ultra compact and rugged**
Easy integration into any Electro-Optics platform
- **High QE: >77% @ 510nm**
Enables better quality image under low light conditions
- **Global shutter, progressive scan technology**
Enables real time, lag-free images at 60Hz full-frame

Resolution	816 x 624
Frame Rate	60Hz
Dynamic Range	72dB
Peak QE	77% @ 510nm

Specification for Hawk 800

Sensor Type	1/1.7" CMOS
Active Pixel	816 x 624
Frame Rate	60Hz
Pixel Size	9.0µm x 9.0µm
Active Area (Diagonal)	7.34mm x 5.62mm (9.24mm)
Dynamic Range	72dB
Anti-blooming	Yes
Spectral Response	300-1100nm
Peak Quantum Efficiency	77% @ 510nm 28% @ 800nm
Non-Linearity	<1%
Total Power Consumption	<4W
Minimum Illumination	< 50µlux
Output Format	12 bit Camera Link (base configuration)
Synchronization	Trigger In & OUT - TTL compatible
Trigger Connectors	SMA type
Cooling	Uncooled
Lens Mount	CS mount, back focus capability
Power Connector	Hirose part code HR10A-7R-4PB
Power Supply	12V DC ±10%
Operating Temperature Range ¹	-20°C to +55°C
Storage Temperature Range	-40°C to +70°C
Dimensions (L*W*H) ²	43mm x 43mm x 37mm
Weight (excluding lens)	95g

Raptor Photonics Limited reserves the right to change this document at any time without notice and disclaims liability for editorial, pictorial or typographical errors.

Demo is available on request.
Pricing AOR subject to volumes.

Ordering Information

Camera

Hawk 800 Digital camera	HK800-CL
Hawk 800 Digital PSU	RPL-HR4-K

Optional Accessories

Mini PC with XCAP Std and frame grabber	RPL-PC-mf2280
Thunderbolt frame grabber	RPL-mf2280
EPIX® EB1 frame grabber	RPL-EPIX-EB1
EPIX® XCAP software	RPL-XCAP-STD
Camera Link Cable (2m) ³	RPL-CL-CBL-2M

Lenses

Optical Visible & CCTV day/night lenses ⁴	RPL-xx-xxxx
--	-------------

Note 1: Extended operating temperature range on request.

Note 2: Dimensions include all connector parts on the camera interface.

Note 3: Longer Camera Link cable available.

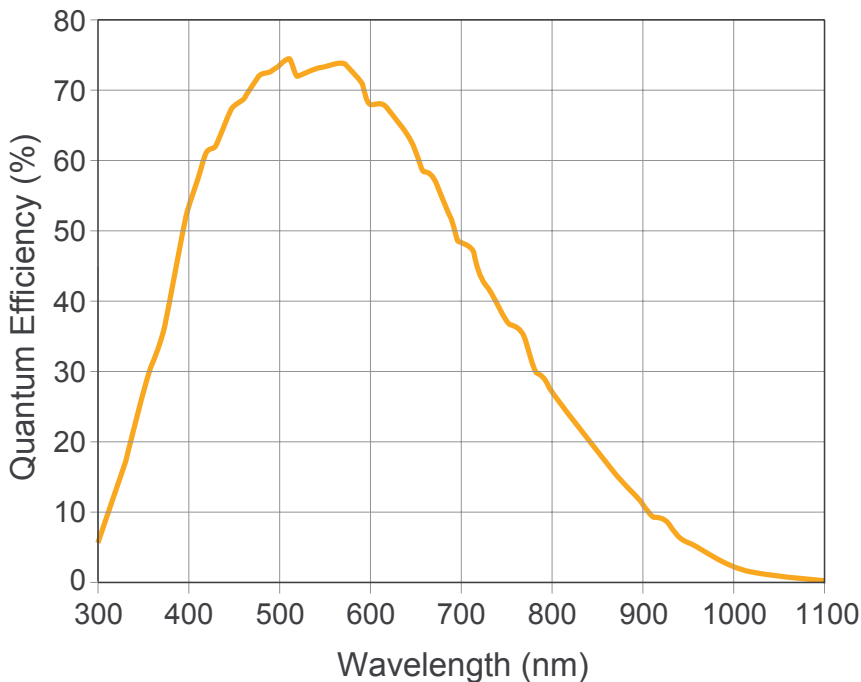
Note 4: Please consult us to check our range of lenses.

Custom Options

- No C-Mount
- Board level
- Extended operational temperature -40°C to +75°C
- Flexi-rigid electronics to fit specific EO systems
- Customized mechanics
- Digital video output eg HD-SDI

Detailed technical drawings can be downloaded at www.raptorphotonics.com

Quantum Efficiency



*Data supplied by sensor manufacturer

Applications

Surveillance

- Low-light Surveillance
- Airborne Surveillance
- Driver Vision Enhancement (DVE)
- Digital Night Vision

Document #: INHK800-CL 0322



Willowbank Business Park
Larne, Co Antrim
BT40 2SF,
Northern Ireland

Raptor Photonics Ltd. (UK)
T: +44(0)2828 270 141
E: sales@raptorphotonics.com
www.raptorphotonics.com

Raptor Photonics Inc. (USA)
T: +1 (877) 230-4836
E: sales@raptorphotonics.com
www.raptorphotonics.com

