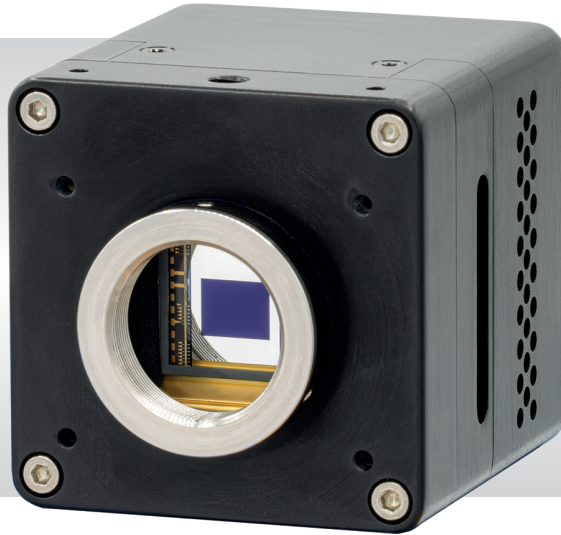


Hawk 252

High Resolution, Ultra Sensitive Digital EMCCD Camera
1280 x 1024 • 25Hz • Digital •



Key Features and Benefits

Cooled HD EMCCD Camera

- **1280 x 1024, 8 μ m pitch EMCCD technology**
Enables highest resolution imaging from 0.3 μ m to 1.1 μ m
- **Back Illuminated EMCCD technology**
Enables ultimate sensitivity imaging (<50 μ lux)
- **High QE: >95% @ 600nm**
GEN III image intensifier performance

Resolution	1280 x 1080
Frame Rate	25Hz
Dynamic Range	55dB
Peak QE	95% @ 600nm

Specification for Hawk 252

Sensor Type	1" Back Thinned Frame Transfer EMCCD
Active Pixel	1280 x 1024
Frame Rate	25Hz
Pixel Size	8µm x 8µm
Active Area	10.24 mm x 8.192 mm
Dynamic Range	55dB
Anti-blooming	Standard
Spectral Response	300-1100nm
Peak Quantum Efficiency	95% @ 600nm
Non-Linearity	<1%
Readout Noise	EM Gain ON: <0.01e- EM Gain OFF: <60e-
Total Power Consumption	<20W (TEC ON, FAN ON)
Minimum Illumination	< 50µlux
Output Format	12 bit Camera Link (base configuration)
Synchronization	Trigger In & OUT - TTL compatible
Trigger Connector	SMA type
Cooling	Active, with fan
Lens Mount	C/mount, back focus capability
Power Connector	Hirose part code HR10A-7R-4PB
Power Supply	12V DC ±10%
Operating Temperature Range ¹	-20°C to +55°C
Storage Temperature Range	-40°C to +70°C
Dimensions (L*W*H) ²	73.13mm x 62.00mm x 62.00mm
Weight (excluding lens)	350g

Raptor Photonics Limited reserves the right to change this document at any time without notice and disclaims liability for editorial, pictorial or typographical errors.

Ordering Information

Camera

Hawk EM252 Digital camera	HK252-CL
Hawk EM252 Digital PSU	RPL-HR4-K-S

Optional Accessories

Mini PC with XCAP Std and frame grabber	RPL-PC-mf2280
Thunderbolt frame grabber	RPL-mf2280
EPIX® EB1 frame grabber	RPL-EPIX-EB1
EPIX® XCAP software	RPL-XCAP-STD
Camera Link Cable (2m) ³	RPL-CL-CBL-2M

Lenses

Optical Visible & CCTV day/night lenses ⁴	RPL-xx-xxxx
--	-------------

Note 1: Extended operating temperature range on request.

Note 2: Dimensions include all connector parts on the camera interface.

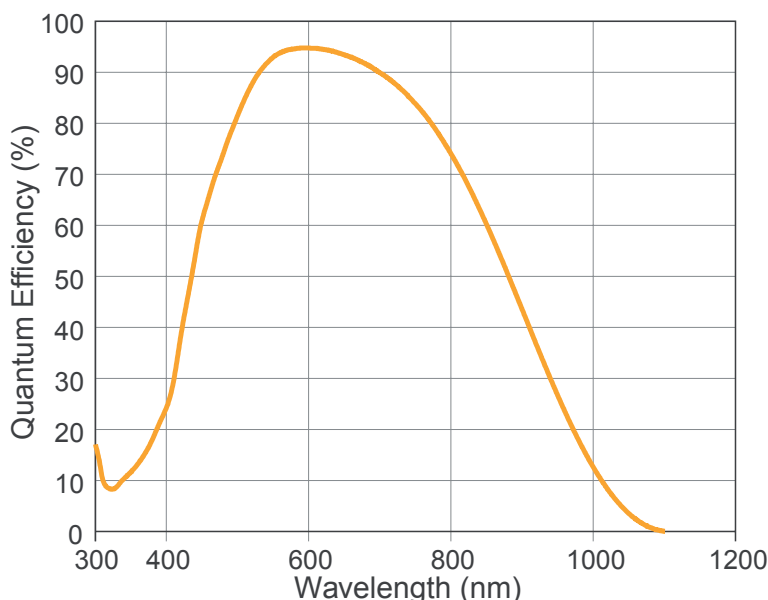
Note 3: Longer Camera Link cable available.

Note 4: Please consult us to check our range of lenses.

Demo is available on request.
Pricing AOR subject to volumes.

Detailed technical drawings
can be downloaded at
www.raptorphotonics.com

Quantum Efficiency



*Data supplied by sensor manufacturer

Applications

Surveillance

- Ground Based Surveillance
- Airborne Surveillance
- Situational Awareness

Scientific

- Astronomy
- Indirect X-ray
- Microscopy
- Fluorescence Imaging

Document #: INHK252 0322